



# WHERE TECHNOLOGY COMES TO **LIFE**

Q1 2025



# Forward Looking Statement

This presentation contains forward-looking statements within the Israeli Securities Law, 1968, the Private Securities Litigation Reform Act of 1995 and other U.S. Federal securities laws, as amended, regarding Pluri Inc. and/or its subsidiaries (collectively the "Company" or "Pluri"), to the extent such statements do not relate to historical or current facts. For example, the Company is using forward looking statements when it discusses the potential of its solutions and innovations, including the potential to drive individual and global well-being and drive sustainability, its technological platform capabilities, its ability to leverage its expertise and platforms to create a network of ventures and partnerships, the capabilities and advantages of such network of companies, its platform ability to develop cell-based solutions, its ability to drive innovation and collaborate successfully with its ventures, , the cell expansion technology use by Ever After Foods to produce mass scale and cost effective food products efficiently and sustainably while solving industry challenges, the ability to reimagine coffee without the ecological cost, its ability to create rapid de-risked ventures, the belief that Coffeesai will be a promising company within a single year and that ICL and Pluri each has unique strengths to achieve their partnership's POC.. Forward-looking statements are based on management's current expectations, estimates, projections, and assumptions about future events, and are subject to several factors and uncertainties that could cause actual results to differ materially from those described in the forward-looking statements. These statements are not guarantees of future performance and involve certain risks, uncertainties, and assumptions about the Company, which are difficult to predict, including projections of the Company's future financial results, its anticipated growth strategies, and anticipated trends in its business and in the market generally. Therefore, actual future results, performance and trends may differ materially from these forward-looking statements due to a variety of factors, including, without limitation: changes in technology and market requirements; the Company may encounter delays or obstacles in launching and/or successfully completing its proposed plans, including research and development; its products may not be approved by regulatory agencies, their technology may not be validated as they progress further and their methods may not be accepted; it may be unable to retain or attract key employees whose knowledge is essential to the development of its products; unforeseen scientific difficulties may develop with its processes; its products may wind up being more expensive than it anticipates; results in the laboratory may not translate to equally good results in real world settings; its patents may not be sufficient; its products may harm recipients or consumers; changes in legislation with an adverse impact; inability to timely develop and introduce new technologies, products and applications; loss of market share and pressure on pricing resulting from competition, which could cause the actual results or performance of the Company or its joint ventures to differ materially from those contemplated in such forward-looking statements. The factors listed above are not exclusive, and further information is contained in the Company's Annual Report on Form 10-K and other reports on file with the U.S. Securities and Exchange Commission. All forward-looking statements speak only as of the date of this presentation. Although the Company believes the expectations reflected in the forward-looking statements contained herein are reasonable, it cannot guarantee future results, level of activity, performance, or achievements. Moreover, neither the Company nor any other person assumes responsibility for the accuracy and completeness of any of these forward-looking statements.

This presentation does not constitute an offer to sell, or the solicitation of an offer to buy, any securities of the Company. The information to be presented is not intended to replace the need to review the Company's formal filings with the U.S Securities and Exchange Commission, including, without limitation, its Annual Report on Form 10-K and any subsequent filings, prior to making any investment in the Company's securities. In case of any inconsistencies between the information provided in this presentation and the Company's regulatory filings, the latter will prevail. Except as otherwise required by law, the Company undertakes no obligation to publicly release any revisions to these forward-looking statements to reflect events or circumstances after the date hereof or to reflect the occurrence of unanticipated events. More detailed information about the risks and uncertainties affecting the Company is contained under the heading "Risk Factors" in the Company's Annual Reports on Form 10-K and Quarterly Reports on Form 10-Q filed with the U.S. Securities and Exchange Commission and available on the SEC's website, [www.sec.gov](http://www.sec.gov).

# Pluri Venture Creation



## Company


- Nasdaq (PLUR), TASE (PLUR.Ta)
- Cash & Deposits: ~\$27 million (as of September 30, 2024)
- Based In Israel With **Global Presence**, Including In The USA and Europe
- Rich IP Portfolio With **~140 Patents** Granted Globally
- In-house **GMP Manufacturing Facility**
- **Two Decades Of Experience** In Cell Processing And Mass Scale Technology Development



## Sectors

 Regenerative Medicine

 Cultivated Meat

 Contract Development and Manufacturing Organization

 Cell-Based Agriculture



## Partners



# From Single Cells To Sustainable Solutions

Pluri harnesses the power of cells, the building blocks of life, to deliver eco-friendly solutions that aim to enhance individual well-being and drive positive global change



# **Eight Billion Lives.** **One Planet.** **Zero Time to Waste.**



**Aging and Health**



**Climate Change**



**Food Security**



**Sustainability**

**A growing, aging world urgently needs  
scalable, sustainable solutions**

# Pluri Technological Platform

Cell-based innovations, powered by validated technology

## Innovative

- **Patented 3D cell expansion**  
High-quality cells produced in large quantities
- **Versatile cell source and types**  
Compatible with human, animal, and plant cells
- **Modular production system**  
Reduces costs and minimizes ecological impact

## Validated

- **Automated, scalable process**  
Efficient and fully controlled
- **In-house GMP facility**  
Ensures quality and compliance with standards
- **Consistent batch production**  
Proven reliability from batch to batch



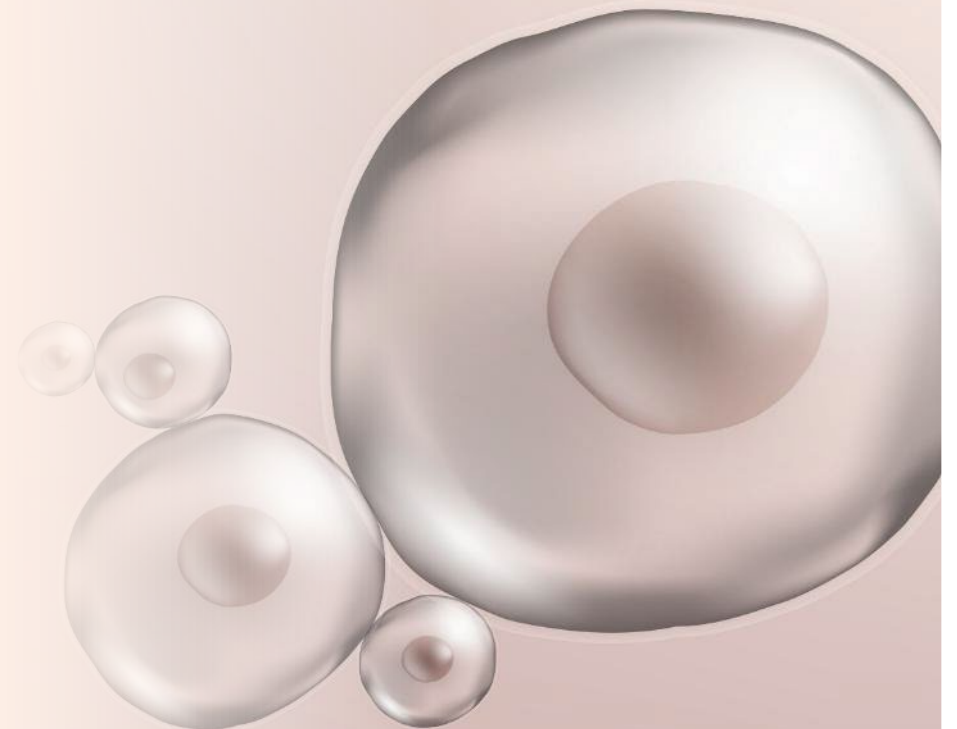
# PluriMatrix™

## Industrial Scale Production



# Over Two Decades of Leadership with Cell-based Solutions

Pluri leverages its expertise and proprietary platform for cell-based solutions to create **a collaborative network of ventures and partnerships**





Immunotherapy

Cultivated cacao

AgTech

Acute Radiation

Osteoarthritis

CDMO

# Cell-based Technology Platform

Cultivated Coffee

Cultivated Meat



And beyond

A collaborative network of companies

Knowhow and expertise

Validated technology and robust IP

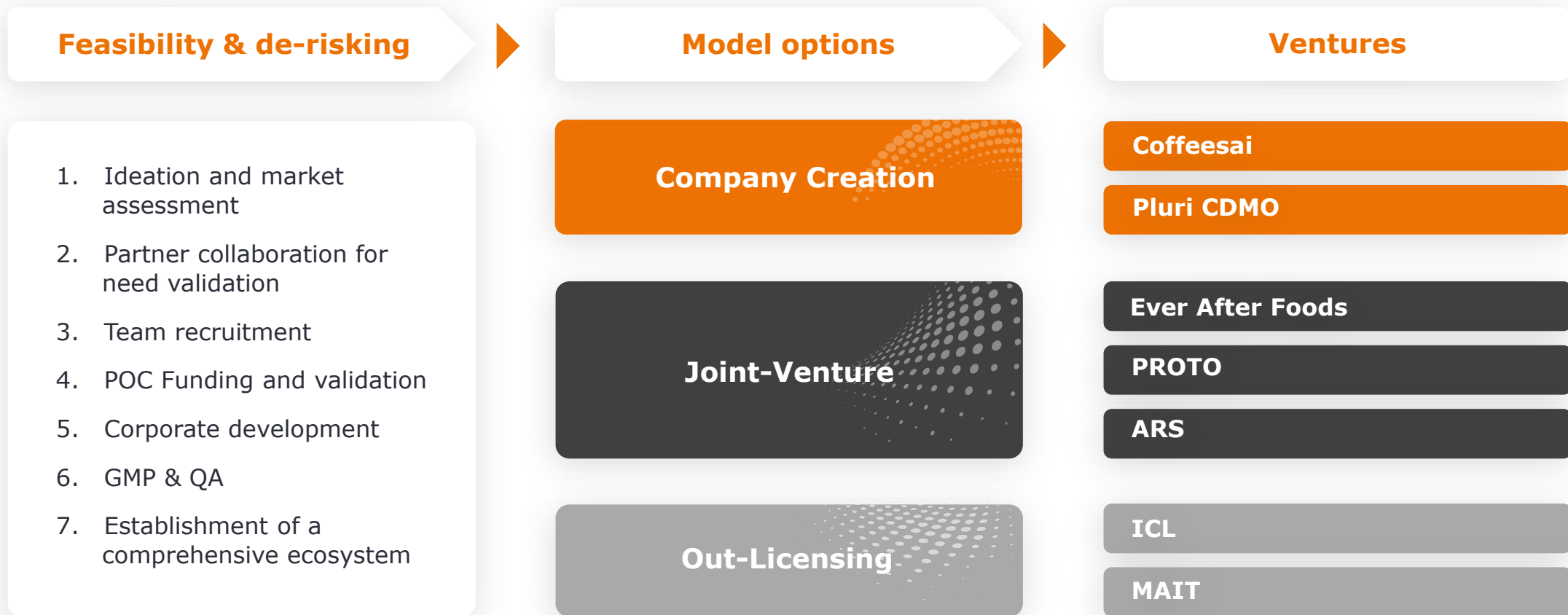
Deep market understanding and strong partnerships

Infrastructure and corporate services

GMP facility with operations and QA resources

# A Clear Path to Venture Creation

Pluri's technology-based platform aims to enable accelerated development and scalable production of cell-based solutions



# A Clear Path to Venture Creation

Pluri's technology-based platform enables accelerated development and scalable production of cell-based solutions

Feasibility & de-risking

Model options

Ventures



**Pluri currently retains majority share ownership in every venture it creates**

# Pluri Establishes a Collaborative Network of Ventures

As each venture thrives, Pluri and its entire network grow stronger, aiming to drive continuous innovation and shared success

**Shared  
Facilities and  
Know-how**



**IP  
Improvements**



**Shared  
Network  
of Partners**



**Accumulating  
Expertise**



# Joint Ventures

The background of the slide features a top-down view of several glass petri dishes. Each dish contains a bacterial culture, showing a dense, textured surface. The dishes are arranged in a somewhat circular pattern, with some in the foreground and others receding into the background. A semi-transparent orange overlay covers the left portion of the image, providing a backdrop for the title text.

# Growing the Future of Food with Cultivated Meat

Ever After Foods leverages Pluri's cell expansion technology to produce mass scale, cost-effective food products in an efficient and sustainable manner, aiming to solve the industry's scalability challenges



## Environmental

- Less land and water are required
- Fewer greenhouse gases
- Less agriculture-related pollution



## Ethical

- Adheres to ethical animal welfare standards



## Consumer

- Natural flavor modification
- Safe modification for healthier food and raw materials

# Ever After Foods Milestones

ever after  
FOODS

Jan.  
2022

Collaboration between  
Pluri and Tnuva announced

 **pluri** CELL-BASED SOLUTIONS AT SCALE ~84.2% ownership

 **TNUVA** ~15.8% ownership

- Tnuva invested \$7.5 million according to a **\$40 million pre-money valuation**
- Pluri granted exclusive global royalty-bearing **license to use its IP and expertise**

Dec.  
2022

Joint venture  
reaches POC

Mar.  
2023

Launch of a **scalable platform** for **cost effective production** of cultivated meat products

Jun.  
2024

**\$10 million** investment round led by **leading global corporates**

- License extended to include cultivated fish
- **Post investment Pluri holds 69%**

The background of the slide features a collection of clear glass marbles scattered across a light-colored, reflective surface. The marbles are in various positions, some in sharp focus and others blurred, creating a sense of depth. The overall color palette is warm and monochromatic, dominated by shades of beige and light brown. On the left side of the slide, there is a solid, semi-transparent orange rectangular area that serves as a backdrop for the title text.

# **Company Creation**



# Reimagining Coffee Without Ecological Cost



## Climate Change

Global coffee production will decrease by half in the next 30 years due to global warming



## Land Shortage

Land suitable for growing coffee will reduce by up to 50% by 2050



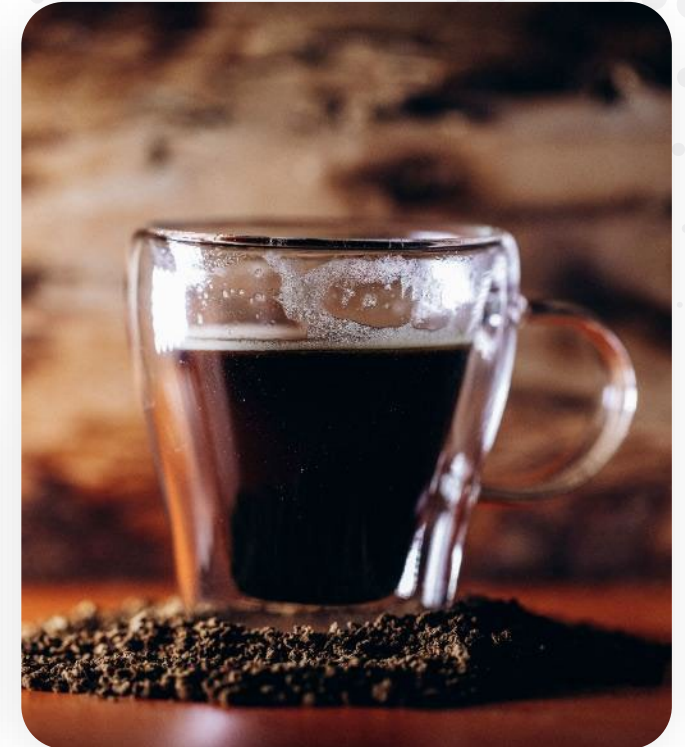
## Price Instability

U.S. coffee import prices have risen by over 65%. Prices changed from \$390 cents per kg to \$624 and back to \$419 cents per kg (2009-2023)



## Carbon Footprint

126 B kg of CO2 emissions per year  
140 liters of water required to produce a single cup of coffee



Sources: NIH, World Coffee Research, World Economic Forum, ICO, Mordor Intelligence, GlobeNewswire

# A Consistent Methodology for Rapid, De-risked Venture Creation

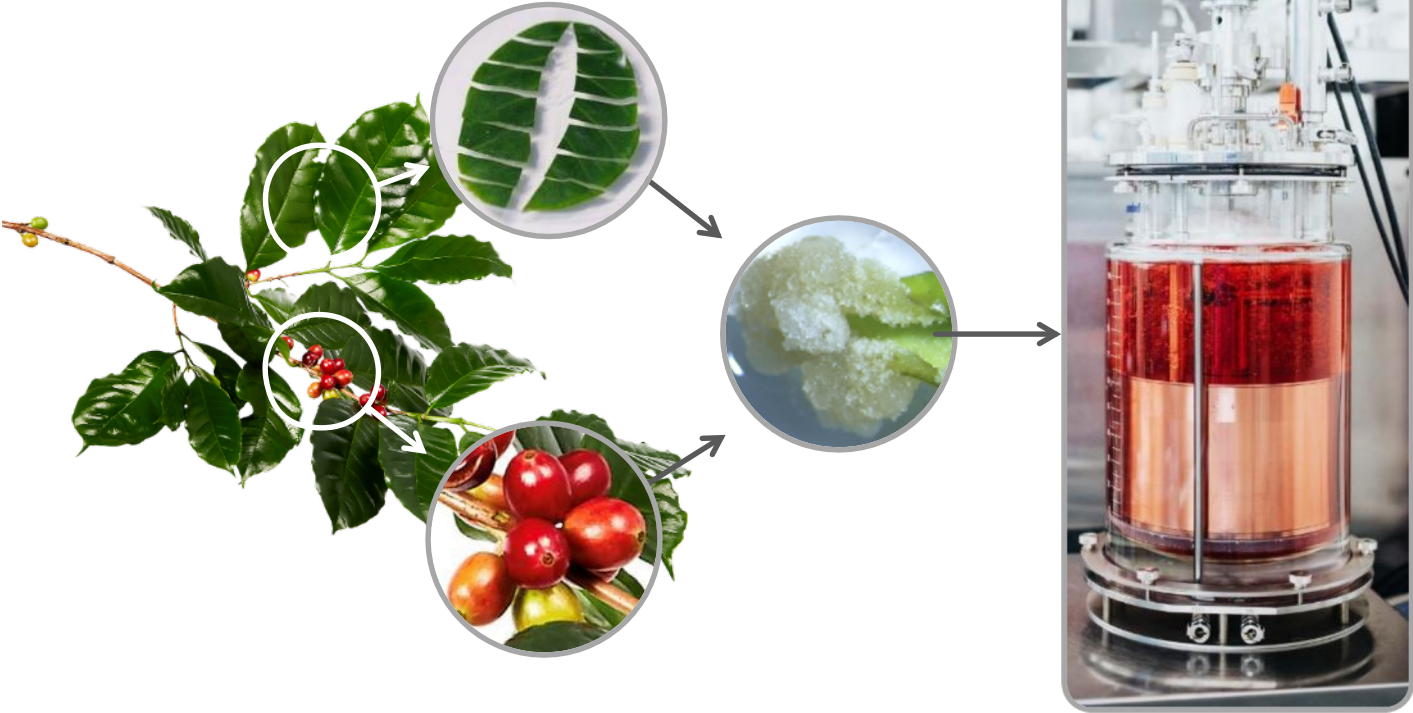


Coffeesai demonstrates the potential creation of a promising company within a single year



# The Coffeesai Solution uses 100% Real Coffee

 coffeesai



 coffeesai



# Out Licensing



# PLX-R18 for Acute Radiation Syndrome

ARS is caused by exposure to high amounts of ionizing radiation, such as in nuclear reactor accidents or warfare

## Ongoing studies

- Studies conducted and funded by U.S. government (NIH, DoD)
- \$4.2 Million contract signed with the US NIAID<sup>1</sup>

## FDA

- FDA cleared Investigational New Drug (IND) application for PLX-R18 for the treatment of ARS in case of nuclear events
- Received FDA Orphan Drug Designation

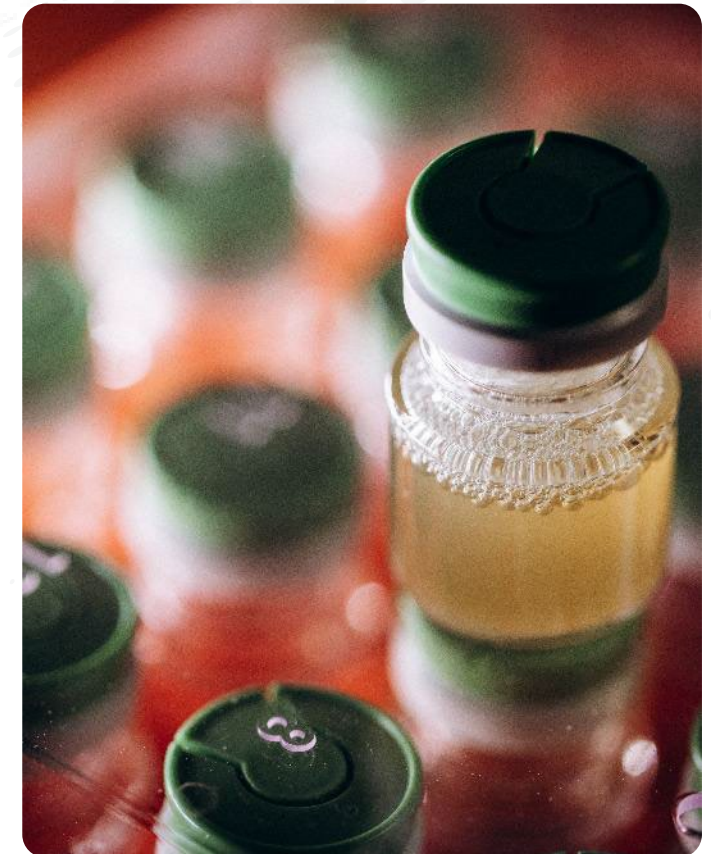
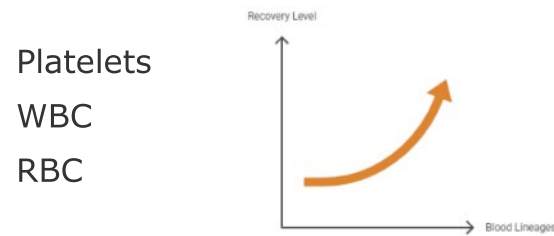
## Survival Rate

Significant increase vs placebo ( $p < 0.0001$ )



## Blood Lineages

Significant recovery of blood lineages ( $p < 0.001$ )



1. This project has been funded in whole or in part with Federal funds from the National Institute of Allergy and Infectious Diseases, National Institutes of Health, Department of Health and Human Services, under Contract No. 75N93023C00012

# Pluri's Recent Achievements



## Launch of Immunotherapy Platform

To develop Placental MAIT cells to treat solid tumors. Pluri also secured a new U.S. granted patent and a collaboration with BIRAD



## Launch of cell-based coffee business

Coffeesai to introduce innovative product that will revolutionize the coffee industry – to establish a collaboration with external investor



## US Government Strategic contract for \$4.2m

Continued research for the treatment of acute radiation syndrome (ARS)



## Collaborations with global agriculture corps

Developing cutting-edge, multi-national agtech solutions



## Launch of CDMO business

Growth in revenues based on recent contracts



## €7.5 million Collaboration with Charite Berlin

PROTO: Phase I/II study for treatment of Knee Osteoarthritis with Pluri's PLX cells



## Cultivated meat collaboration with global food giants

Ever After Foods secures \$10 million strategic investment round



## Consolidated cash balance \$27m (as of September 30, 2024)

We halved our burn rate to approximately \$16m per year

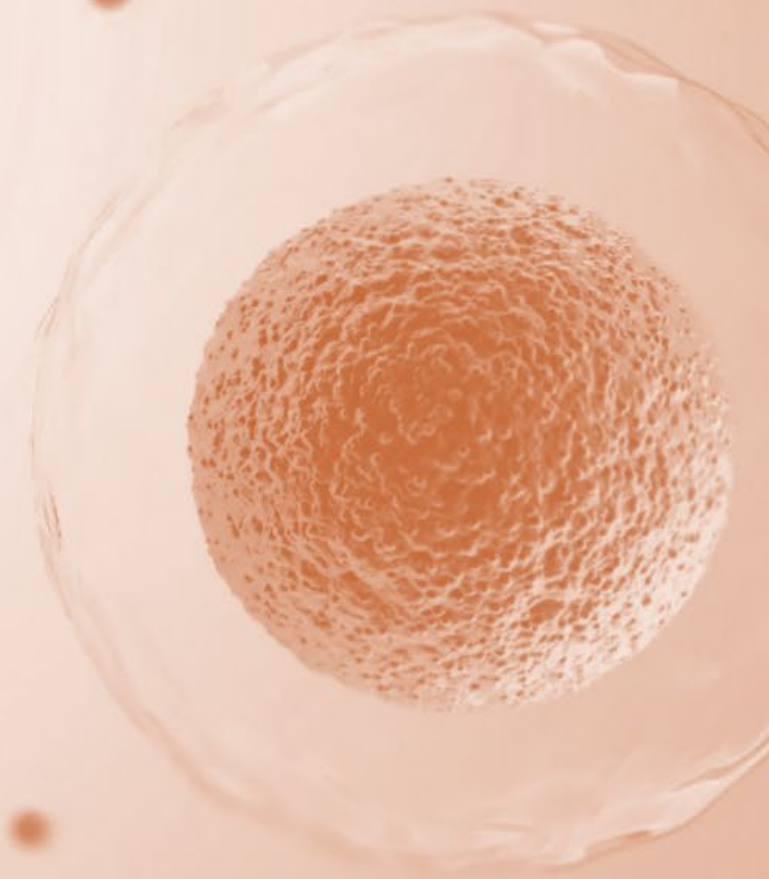


## \$10m strategic investment and expansion into cacao market

Pluri secures \$6.5m strategic investment and purchases over 70% of Kokomodo, a company specializing in cultivated cacao. Pluri then secures an additional \$3.5 investment from major shareholder

# Science in Service of Humanity

Pluri is a global leader in cell technology, aiming to deliver cell-based solutions with a goal to improve global well-being and drive sustainability in multiple sectors



# Our Collaborative Network of Partnerships

## Regulatory



EUROPEAN MEDICINES AGENCY



## Scientific Collaborations and Partnering



## Funding





# Our Team



**Yaky Yanay**  
CEO & President



**Liat Zalts**  
Chief Financial Officer



**Lior Raviv**  
Chief Technology Officer



**Dr. Michal Sheleg, PhD**  
VP Clinical Development



**Nimrod Bar Zvi**  
Chief Commercial Officer



**Dr. Arthur Machlenkin, PhD**  
Chief Scientific Officer



**Efrat Livne-Hadass**  
Chief Wellbeing Officer



**Orly Amiran**  
Chief Quality Officer



**Efrat Kaduri**  
Chief Business Development  
Officer - Pharma



**John Dvor**  
EVP North America

# THANK YOU.

Our cell-based innovations are aimed at transforming industries with a goal to create a more sustainable, healthier world. From the food we eat to the medicine we consume, we are building solutions that can potentially serve humanity, one breakthrough at a time.



**For further info:** [investor.relations@pluri-biotech.com](mailto:investor.relations@pluri-biotech.com)